








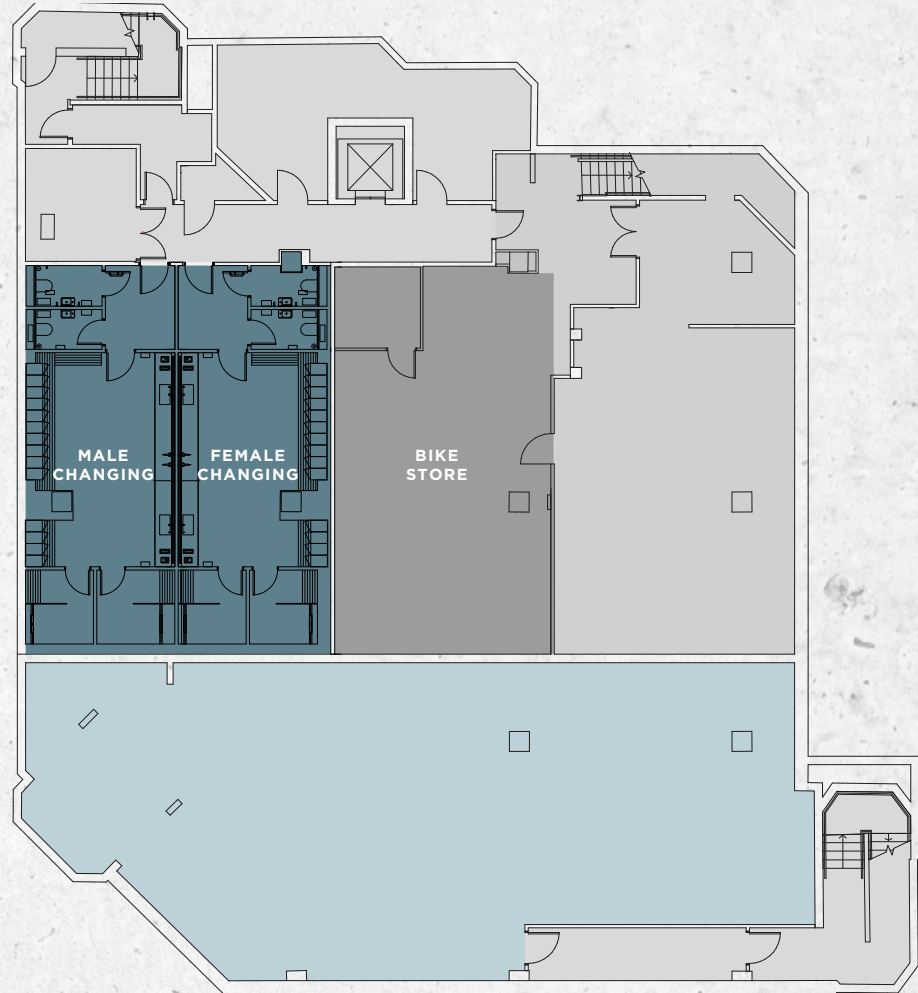
# LOWER GROUND FLOOR

FLOOR	USE	SQ FT	SQ M
Fourth	Office	3,670	341
Third	Office	5,620	522
Second	Office	5,691	529
First	Office	4,982	463
<b>TOTAL</b>		<b>19,963</b>	<b>1,855</b>

Floor areas taken from Architect's plans and calculated based on net internal area.

-  Office
-  Reception
-  Changing facilities
-  Bike store
-  Terrace
-  Core
-  Retail

SHOE LANE










NEW INN HALL STREET



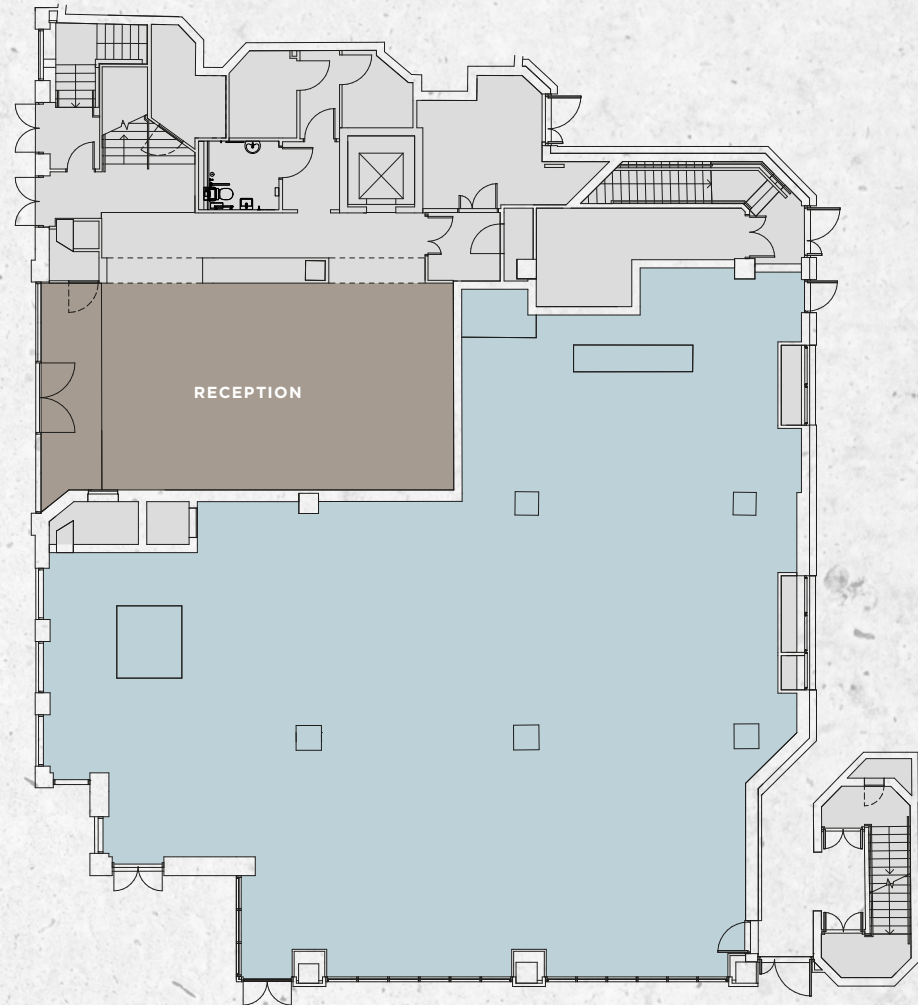
# GROUND FLOOR

FLOOR	USE	SQ FT	SQ M
Fourth	Office	3,670	341
Third	Office	5,620	522
Second	Office	5,691	529
First	Office	4,982	463
<b>TOTAL</b>		<b>19,963</b>	<b>1,855</b>

Floor areas taken from Architect's plans and calculated based on net internal area.

-  Office
-  Reception
-  Changing facilities
-  Bike store
-  Terrace
-  Core
-  Retail

SHOE LANE



NEW INN HALL STREET










# FIRST FLOOR

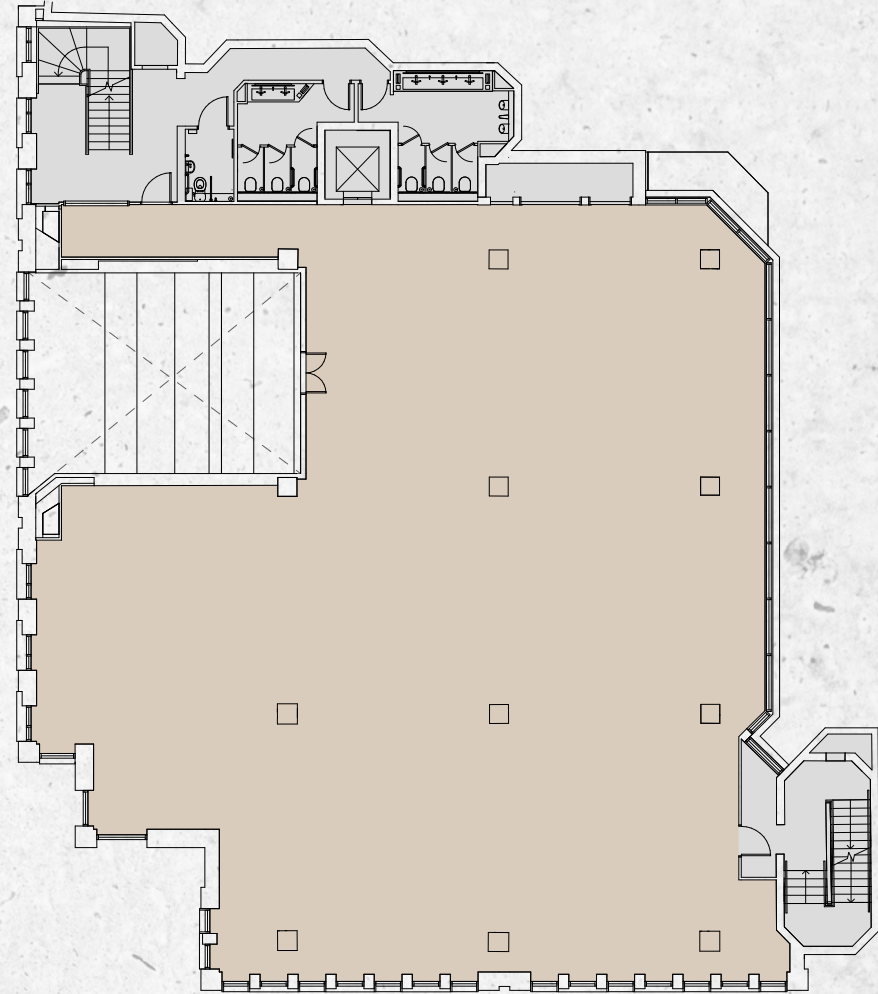
4,982 sq ft /  
463 sq m

FLOOR	USE	SQ FT	SQ M
Fourth	Office	3,670	341
Third	Office	5,620	522
Second	Office	5,691	529
First	Office	4,982	463
<b>TOTAL</b>		<b>19,963</b>	<b>1,855</b>

Floor areas taken from Architect's plans and calculated based on net internal area.

-  Office
-  Reception
-  Changing facilities
-  Bike store
-  Terrace
-  Core
-  Retail

SHOE LANE



NEW INN HALL STREET










# SECOND FLOOR

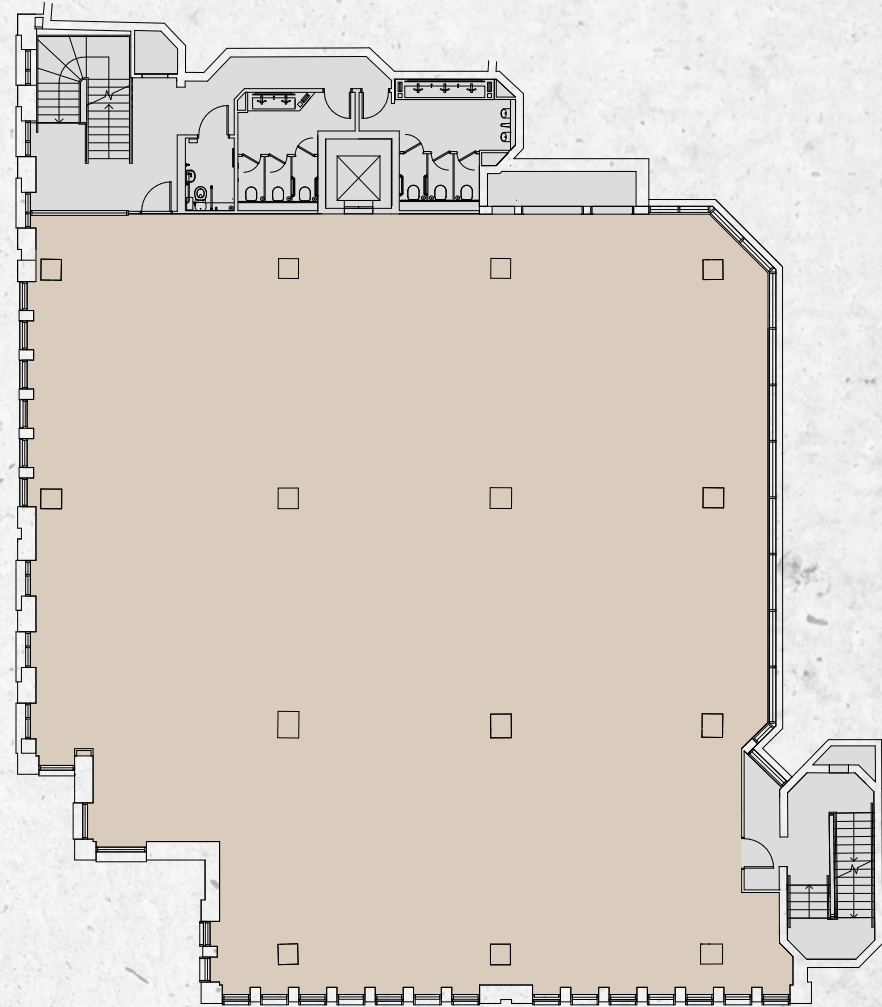
5,691 sq ft /  
529 sq m

FLOOR	USE	SQ FT	SQ M
Fourth	Office	3,670	341
Third	Office	5,620	522
Second	Office	5,691	529
First	Office	4,982	463
<b>TOTAL</b>		<b>19,963</b>	<b>1,855</b>

Floor areas taken from Architect's plans and calculated based on net internal area.

-  Office
-  Reception
-  Changing facilities
-  Bike store
-  Terrace
-  Core
-  Retail

SHOE LANE



NEW INN HALL STREET










# THIRD FLOOR

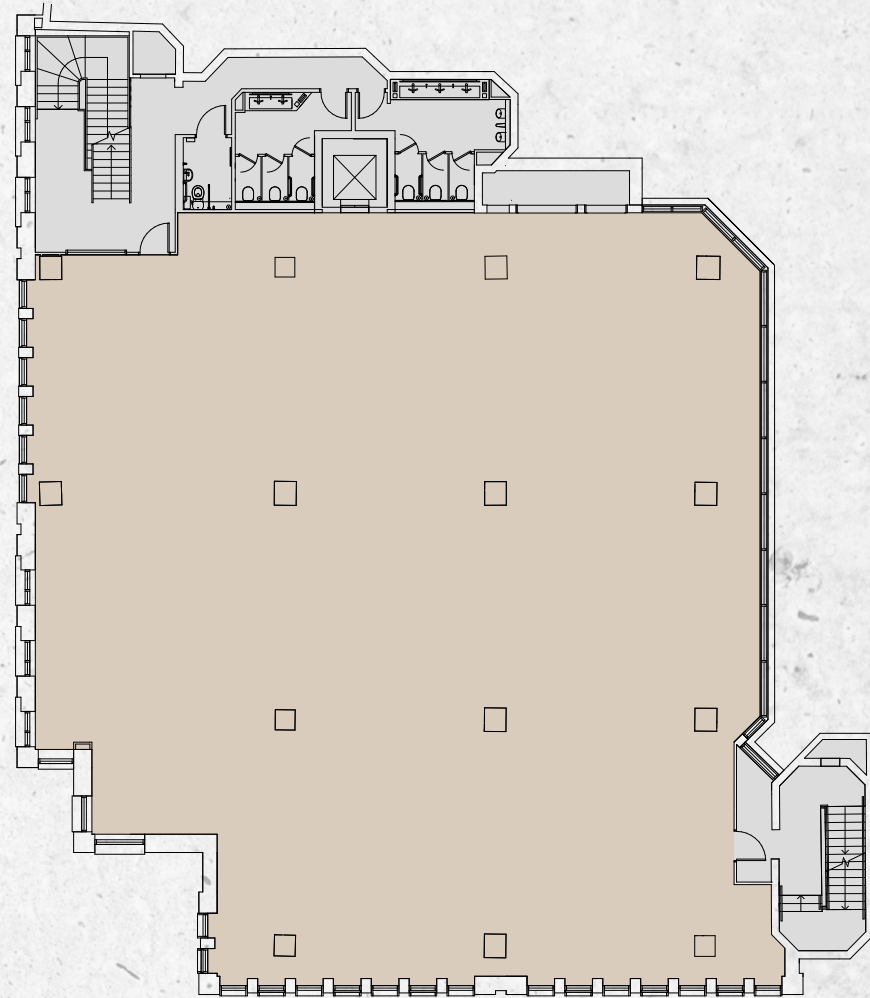
5,620 sq ft /  
522 sq m

FLOOR	USE	SQ FT	SQ M
Fourth	Office	3,670	341
Third	Office	5,620	522
Second	Office	5,691	529
First	Office	4,982	463
<b>TOTAL</b>		<b>19,963</b>	<b>1,855</b>

Floor areas taken from Architect's plans and calculated based on net internal area.

-  Office
-  Reception
-  Changing facilities
-  Bike store
-  Terrace
-  Core
-  Retail

SHOE LANE



NEW INN HALL STREET




# FOURTH FLOOR

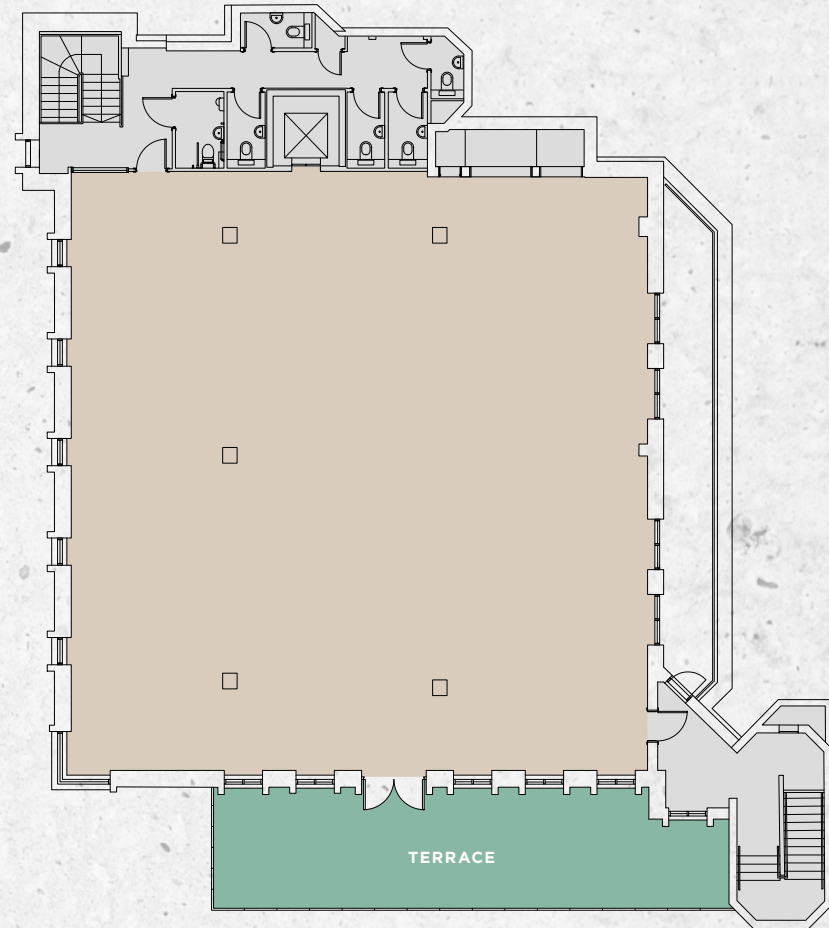
3,670 sq ft /  
341 sq m

FLOOR	USE	SQ FT	SQ M
Fourth	Office	3,670	341
Third	Office	5,620	522
Second	Office	5,691	529
First	Office	4,982	463
<b>TOTAL</b>		<b>19,963</b>	<b>1,855</b>

Floor areas taken from Architect's plans and calculated based on net internal area.

- 
- Office
- Reception
- Changing facilities
- Bike store
- Terrace
- Core
- Retail

SHOE LANE



NEW INN HALL STREET